



**TimberLine  
BARNs**

[www.TimberLineBarns.com](http://www.TimberLineBarns.com)

Quality  
Durability  
Functionality



since 2005



# *why choose* **TIMBERLINE BARN**



## **YOUR NEIGHBORS**

Timberline Barns is a locally owned and operated company. We love and serve the people of Virginia, Tennessee, Kentucky, and Ohio. This is our home; here is our commitment to family and traditional values. Our customers all share the values of supporting our local economy as we create storage spaces.

.....



## **TREATED AND NOTCHED**

To keep our promise of offering our customers long lasting products, all of our floor runners measure 4" x 6" and are notched for extra strength. All of the exposed lumber is pressure treated to help withstand the elements and ward off termites.

.....



## **PREMIUM LUMBER**

We believe our customers shouldn't have to buy a shed after every few years. That's why we opted to **ONLY** use premium lumber for our framing and flooring. This increases the longevity of our buildings so that sheds can be passed on to the next generation.





**Daniel Vendley**

Timberline Barns exists to build quality storage buildings that truly enhance the lives of our customers. We do this while adhering to our Christian values. Our family owned company dates back to 2007 when Daniel Vendley (our current CEO) got into the shed industry. Daniel grew up in an Amish Mennonite home where he grew up appreciating the values of faith and family.

Timberline Barns’ vision is to provide our customers with quality buildings to help make space for the things that truly matter for everyone. Our customers’ buying experience is at the forefront of our company. From offering great customer service to providing resources to our customers, each customer becomes like family with Timberline Barns.

Thank You,  
Daniel



**Main Office Staff**

**TABLE OF CONTENTS**

Why Choose Timberline Barns . . . . 2

About Timberline Barns . . . . . 3

Low Wall Barn . . . . . 4

Utility Building . . . . . 6

Garden Shed . . . . . 8

Lofted Barn . . . . .10

Lofted Barn w/2 Windows . . . . .12

Cabin/Office . . . . .14

Lofted Cabin w/6’ Porch . . . . .16

Lofted Barn w/Premium Porch . . . .18

Garages . . . . . 20

Features . . . . . 22

Options . . . . .24

Delivery and Site Prep . . . . . 26





*the* **LOW WALL BARN** is our most economical and popular shed. Commonly used to store garden tools and supplies, the low barn is every gardener's choice not only for storage use but also for how affordable this building is. Its low profile blends in really well with many homes while still adding beauty and character.



*High quality buildings  
manufactured and sold by a  
great team!*

Mary G

## *the* **LOW WALL BARN**

**INCLUDED OPTIONS:** 8x8 Barn with Honey Gold stain on pressure treated T1-11 siding, 4' single door, black metal roof, and side vents



## STANDARD FEATURES

- Honey Gold stain on treated T1-11 siding (or choose between metal and vinyl siding with many color options)
- Metal roof (or choose shingles)
- Thick-coated galvanized nails
- Tight reinforced wood door(s)
- 5/8" treated plywood floor
- Treated 16" O.C. floor joists

## Low Wall Barn Prices

Size	Cash	FlexLease
8x8	\$1,495	\$55.37
8x10	\$1,625	\$60.19
8x12	\$1,725	\$63.89
8x16	\$2,150	\$79.63
10x10	\$1,950	\$72.22
10x12	\$2,095	\$77.59
10x14	\$2,350	\$87.04
10x16	\$2,575	\$95.37
10x18	\$2,895	\$107.22
10x20	\$3,175	\$117.59
12x14	\$2,995	\$110.93
12x16	\$3,225	\$119.44
12x20	\$3,775	\$139.81

Prices shown include a 2.5% discount offered for purchases made with cash or check. Credit card purchases are not eligible for the discounted price and will be priced 2.5% higher.



*the BARN* 10x12 with treated T1-11 siding, 6' double door, and a red metal roof



*the BARN* 10x12 with treated T1-11 siding, 6' double door, and a black metal roof







*the* **UTILITY BUILDING** will add some southern charm to your property. This building comes with a lot of storage space and can store all of your home clutter. This shed's quality construction and detailed finishing are meant to last for many years. See page 25 for options and accessories that can be added to create the perfect building for your needs.



*The woman at your Harlan, Ky office was very nice and helped me find the one that was right for me, looking forward to having mine delivered and set up soon.*

Johna F

## *the* **UTILITY BUILDING**

**INCLUDED OPTIONS:** 10x12 with treated T1-11 siding, 6' double door, and a red metal roof



# STANDARD FEATURES

- Honey Gold stain on treated T1-11 siding (or choose between metal and vinyl siding with many color options)
- Metal roof (or choose shingles)
- Thick-coated galvanized nails
- Tight reinforced wood door(s)
- 5/8" treated plywood floor
- Treated 16" O.C. floor joists



*the* **UTILITY BUILDING w/no WINDOWS** 12x20 with white vinyl siding & trim, 6' fiberglass double doors, and a black metal roof



*the* **UTILITY BUILDING w/no WINDOWS** 8x12 with bright red metal siding and white trim, 4' single door & white metal roof

# Utility Building Prices

Size	Cash	FlexLease	Size	Cash	FlexLease
8x8	\$1,595	\$59.07	12x16	\$3,350	\$124.07
8x10	\$1,715	\$63.52	12x20	\$3,950	\$146.30
8x12	\$1,850	\$68.52	12x24	\$4,575	\$169.44
8x16	\$2,295	\$85.00	12x28	\$5,225	\$193.52
10x10	\$2,150	\$79.63	12x30	\$5,550	\$205.56
10x12	\$2,325	\$86.11	12x32	\$5,875	\$217.59
10x14	\$2,550	\$94.44	12x36	\$6,450	\$238.89
10x16	\$2,695	\$99.81	14x16	\$4,575	\$169.44
10x18	\$3,025	\$112.04	14x20	\$5,250	\$194.44
10x20	\$3,350	\$124.07	14x24	\$5,995	\$222.04
10x24	\$3,750	\$138.89	14x28	\$6,795	\$251.67
12x14	\$3,175	\$117.59	14x32	\$7,695	\$285.00
			14x36	\$8,595	\$318.33

Prices shown include a 2.5% discount offered for purchases made with cash or check. Credit card purchases are not eligible for the discounted price and will be priced 2.5% higher.







*the* **GARDEN SHED** is our Utility shed with the addition of windows. This traditional shed can serve you in more ways than just solving storage dilemmas. With the windows allowing in natural light the Garden Shed can be transformed into a home retreat or even a backyard office. This shed's use is unlimited so let your creativity flow.



*Quality craftsmanship,  
great sales team. Ask for  
John!*

Sheila H

## *the* **GARDEN SHED**

**INCLUDED OPTIONS:** 10x12 Garden Shed with Honey Gold stain on pressure treated T1-11 siding, 6' double doors, 24"x36" window, green metal roof, & side vents



## STANDARD FEATURES

- Honey Gold stain on treated T1-11 siding (or choose between metal and vinyl siding with many color options)
- Metal roof (or choose shingles)
- Thick-coated galvanized nails
- Tight reinforced wood door(s)
- 5/8" treated plywood floor
- Treated 16" O.C. floor joists
- One window for natural lighting



*the* **LOFTED GARDEN SHED w/ONE WINDOW** 10x12 with treated T1-11 siding, 6' double doors, a 24"x36" window, & brown metal roof

## Garden Shed Prices

Size	Cash	FlexLease	Lofted	FlexLease	Size	Cash	FlexLease	Lofted	FlexLease
8x8	\$1,670	\$61.85	\$1,870	\$69.26	12x20	\$4,025	\$149.07	\$4,625	\$171.30
8x10	\$1,790	\$66.30	\$2,200	\$81.48	12x24	\$4,650	\$172.22	\$5,325	\$197.22
8x12	\$1,925	\$71.30	\$2,370	\$87.78	12x28	\$5,300	\$196.30	\$6,025	\$223.15
8x16	\$2,370	\$87.78	\$2,670	\$98.89	12x30	\$5,625	\$208.33	\$6,370	\$235.93
10x10	\$2,225	\$82.41	\$2,525	\$93.52	12x32	\$5,950	\$220.37	\$6,575	\$243.52
10x12	\$2,400	\$88.89	\$2,725	\$100.93	12x36	\$6,525	\$241.67	\$7,225	\$267.59
10x14	\$2,625	\$97.22	\$3,025	\$112.04	14x16	\$4,650	\$172.22	\$5,350	\$198.15
10x16	\$2,770	\$102.59	\$3,170	\$117.41	14x20	\$5,325	\$197.22	\$5,770	\$213.70
10x18	\$3,100	\$114.81	\$3,550	\$131.48	14x24	\$6,070	\$224.81	\$6,670	\$247.04
10x20	\$3,425	\$126.85	\$3,800	\$140.74	14x28	\$6,870	\$254.44	\$7,500	\$277.78
10x24	\$3,825	\$141.67	\$4,025	\$149.07	14x32	\$7,770	\$287.78	\$8,425	\$312.04
12x14	\$3,250	\$120.37	\$3,750	\$138.89	14x36	\$8,670	\$321.11	\$9,350	\$346.30
12x16	\$3,425	\$126.85	\$3,925	\$145.37					

Prices shown include a 2.5% discount offered for purchases made with cash or check. Credit card purchases are not eligible for the discounted price and will be priced 2.5% higher.



*the* **GARDEN SHED w/ONE WINDOW** 12x16 with white vinyl siding & trim, 6' fiberglass double doors, and a black metal roof







*the* **LOFTED BARN** is the right fit for you if you are someone who loves the country style look. This spacious shed includes a loft, heavy duty doors, and offers the most headroom of any of our storage buildings. Sided with wood, vinyl, or metal, this shed can match your personal style for your property.



*The building is great and the lofts are perfect! I have been able to clean out closets, my laundry room and an old building and we still have lots of room for my husband's workshop! We are thrilled! Our only regret is we did not get a building years ago!*

Nicole B

## *the* **LOFTED BARN** (NO WINDOWS)

**INCLUDED OPTIONS:** 10x12 Lofted Barn with charcoal metal siding and dark red trim, 6' double doors and bright red metal roof



## STANDARD FEATURES

- Honey Gold stain on treated T1-11 siding (or choose between metal and vinyl siding with many color options)
- Metal roof (or choose shingles)
- Thick-coated galvanized nails
- Tight reinforced wood door(s)
- 5/8" treated plywood floor
- Treated 16" O.C. floor joists

## Lofted Barn Prices

Size	Cash	FlexLease	Size	Cash	FlexLease
8x8	\$1,795	\$66.48	12x16	\$3,850	\$142.59
8x10	\$2,125	\$78.70	12x20	\$4,550	\$168.52
8x12	\$2,295	\$85.00	12x24	\$5,250	\$194.44
8x16	\$2,595	\$96.11	12x28	\$5,950	\$220.37
10x10	\$2,450	\$90.74	12x30	\$6,295	\$233.15
10x12	\$2,650	\$98.15	12x32	\$6,500	\$240.74
10x14	\$2,950	\$109.26	12x36	\$7,150	\$264.81
10x16	\$3,095	\$114.63	14x16	\$5,275	\$195.37
10x18	\$3,475	\$128.70	14x20	\$5,695	\$210.93
10x20	\$3,725	\$137.96	14x24	\$6,595	\$244.26
10x24	\$3,955	\$147.96	14x28	\$7,425	\$275.00
12x14	\$3,675	\$136.11	14x32	\$8,350	\$309.26
			14x36	\$9,275	\$343.52

Prices shown include a 2.5% discount offered for purchases made with cash or check. Credit card purchases are not eligible for the discounted price and will be priced 2.5% higher.



### *the* LOFTED BARN w/NO WINDOWS

10x12 with treated T1-11 Siding, 6' double door, green metal roof, and side vents



### *the* LOFTED BARN w/NO WINDOWS

12x28 with Wicker vinyl siding, white fiberglass double doors, & red metal roof







*the* **LOFTED BARN** WITH 2  
**WINDOWS** will turn your back-  
yard into a home getaway. The  
two windows that are added  
to this shed allows it to be mul-  
tipurpose. You can start your  
gardening pots or simply turn this  
shed it into a kids play house and  
still have a lot of storage space left  
over. This is your ultimate multipur-  
pose shed with a big bang for your  
buck.



*We ordered a 12x36 in mid  
summer. Delivery was quick  
after our order went in.*

Wendy B

## *the* **LOFTED BARN** WITH 2 WINDOWS

**INCLUDED OPTIONS:** 10x16 Lofted Barn with Honey Gold stain on pressure  
treated T1-11 siding, 6' double doors, (2) 24"x36" windows, red metal roof, and gable vents



# STANDARD FEATURES

- Honey Gold stain on treated T1-11 siding (or choose between metal and vinyl siding with many color options)
- Metal roof (or choose shingles)
- Thick-coated galvanized nails
- Tight reinforced wood door(s)
- 5/8" treated plywood floor
- Treated 16" O.C. floor joists
- Two windows for natural lighting

## Lofted Barn w/2 Windows PRICES

Size	Cash	FlexLease	Size	Cash	FlexLease
10x16	\$3,245	\$120.19	12x30	\$6,445	\$238.70
10x18	\$3,625	\$134.26	12x32	\$6,650	\$246.30
10x20	\$3,875	\$143.52	12x36	\$7,300	\$270.37
10x24	\$4,145	\$153.52	14x16	\$5,425	\$200.93
12x14	\$3,825	\$141.67	14x20	\$5,845	\$216.48
12x16	\$4,000	\$148.15	14x24	\$6,745	\$249.48
12x20	\$4,700	\$174.07	14x28	\$7,575	\$280.56
12x24	\$5,400	\$200.00	14x32	\$8,500	\$314.81
			14x36	\$9,425	\$349.07

Prices shown include a 2.5% discount offered for purchases made with cash or check. Credit card purchases are not eligible for the discounted price and will be priced 2.5% higher.



*the* **LOFTED BARN w/2 Windows** 10x16 with dark red metal siding, white trim, 6' double door, 2 windows, & black metal roof



*the* **LOFTED BARN w/2 Windows** 10x16 with Harvard Slate vinyl siding, white fiberglass double doors, 2 windows, shutters, & red metal roof







*the* **CABIN/OFFICE** WITH 6'  
PORCH should be considered  
if to want to turn your "shed  
look" up a notch. This building  
comes equipped with a porch  
and plenty of space inside. Cabin  
owners have turned this building  
into an office space right on their  
property or a cabin in the woods  
for hunting and getting away from  
the noisy city.



*Look at all the options they  
have! Then call John to see  
what they can do for you!*

Donna S

## *the* **CABIN/OFFICE** WITH 6' PORCH

**INCLUDED OPTIONS:** 10x20 Cabin/Office with Honey  
Gold stain on pressure treated T1-11 siding, metal entry door, 3 windows  
and a brown metal roof



# STANDARD FEATURES

- Honey Gold stain on treated T1-11 siding (or choose between metal and vinyl siding with many color options)
- Metal roof (or choose shingles)
- Thick-coated galvanized nails
- Metal entry door
- 5/8" treated plywood floor
- Treated 16" O.C. floor joists
- 3 windows for natural lighting

# Cabin/Office Prices

Size	Cash	FlexLease	Size	Cash	FlexLease
8x12	\$2,395	\$88.70	12x28	\$5,895	\$218.33
8x16	\$2,995	\$110.93	12x30	\$6,250	\$231.48
10x16	\$3,550	\$131.48	12x32	\$6,650	\$246.30
10x20	\$4,125	\$152.78	12x36	\$7,125	\$263.89
10x24	\$4,795	\$177.59	14x24	\$6,725	\$249.07
12x16	\$4,325	\$160.19	14x28	\$5,895	\$218.33
12x20	\$4,850	\$179.63	14x32	\$8,395	\$310.93
12x24	\$5,295	\$196.11	14x36	\$9,295	\$344.26

Prices shown include a 2.5% discount offered for purchases made with cash or check. Credit card purchases are not eligible for the discounted price and will be priced 2.5% higher.



*the* **CABIN/OFFICE w/6' PORCH**  
12x24 with treated T1-11 siding, metal entry door,  
3 windows and a red metal roof



*the* **CABIN/OFFICE w/6' PORCH**  
10x24 with treated T1-11 siding, metal entry door,  
3 windows and a green metal roof







*the* **LOFTED CABIN WITH 6'**  
**PORCH** is well suited for a mountain property or your backyard. The roomy interior along with the loft help to make sure your space won't feel too cramped. The overhead loft can be used for storage or turned into a cozy sleeping area. This cabin could become your home away from home.



*I looked at other sheds and Timberline by far had a better product.*

Bob W

## *the* **LOFTED CABIN WITH 6' PORCH**

**INCLUDED OPTIONS:** 10x24 Lofted Cabin w/6' porch with Honey Gold stain on pressure treated T1-11 siding, 9-lite door, 3 windows and a red metal roof



## STANDARD FEATURES

- Honey Gold stain on treated T1-11 siding (or choose between metal and vinyl siding with many color options)
- Metal roof (or choose shingles)
- Thick-coated galvanized nails
- Metal entry door (solid or 9-lite)
- 5/8" treated plywood floor
- Treated 16" O.C. floor joists
- 3 windows for natural lighting

## Lofted Cabin Prices

Size	Cash	FlexLease	Size	Cash	FlexLease
8x12	\$2,850	\$105.56	12x28	\$6,750	\$250.00
8x16	\$3,150	\$116.67	12x30	\$7,125	\$263.89
10x16	\$3,725	\$137.96	12x32	\$7,395	\$273.89
10x20	\$4,425	\$163.89	\$7,995	\$296.11	
10x24	\$4,995	\$185.00	14x24	\$7,395	\$273.89
12x16	\$4,625	\$171.30	14x28	\$8,225	\$304.63
12x20	\$5,550	\$205.56	14x32	\$9,150	\$338.89
12x24	\$5,975	\$221.30	14x36	\$9,425	\$349.07

Prices shown include a 2.5% discount offered for purchases made with cash or check. Credit card purchases are not eligible for the discounted price and will be priced 2.5% higher.



### *the* LOFTED CABIN w/4' PORCH

8x16 with treated T1-11 siding, single wooden door, 3 windows and a green metal roof



### *the* LOFTED CABIN w/6' PORCH

10x16 with treated T1-11 siding, 9-lite door, 3 windows and a brown metal roof







*the* **LOFTED CABIN** WITH **PREMIUM PORCH PACKAGE** takes your outdoor living space to the next level. This well-built cabin is sure to add value to your property. The stunning porch design will impress your friends and you'll love the roomy interior. Relax in this beautiful cabin or loan it out to friends to stay the night.



*Loved everything about my experience! Love my shed, the price, the staff, the delivery, and setup!*

Barbara W

## *the* **LOFTED CABIN** WITH **PREMIUM PORCH PACKAGE**

**INCLUDED OPTIONS:** 12x32 Lofted Premium Porch with Honey Gold stain on pressure treated T1-11 siding, 9-lite door, 5 windows and a red metal roof



## STANDARD FEATURES

- Honey Gold stain on treated T1-11 siding (or choose between metal and vinyl siding with many color options)
- Metal roof (or choose shingles)
- Thick-coated galvanized nails
- 5/8" treated plywood floor
- Treated 16" O.C. floor joists
- Premium Porch Package includes: Wrap around porch, 3 railing sections, 9 lite entrance door, & five 2'x3' windows
- Side Porch Package includes: 4'x6' Porch, 9-lite entry door, and 2 Windows

## Lofted Cabin w/PORCH PRICES

### Premium Porch Package

Add \$999 to the base price of

- Lofted Barn (p.11) or
- Utility Building (p.7)

Minimum size available is 12x24

Length includes porch

### Side Porch Package

Add \$695 to the base price of

- Lofted Barn (p.11) or
- Utility Building (p.7)

Minimum size available is 12x20

Prices shown include a 2.5% discount offered for purchases made with cash or check. Credit card purchases are not eligible for the discounted price and will be priced 2.5% higher.



### *the* LOFTED SIDE PORCH w/2 WINDOWS

12x20 with Wicker vinyl siding, 9-lite door, 2 windows w/ shutters and a red metal roof



### *the* CABIN w/PREMIUM PORCH PACKAGE

12x32 with treated T1-11 siding, 9-lite door, 5 windows, and a black metal roof







*the* **GARAGE** is your best bet in affordable storage garages. Let's face it. We all want to make sure our cars are not damaged by snow or extreme southern heat. This building comes with lots of storage space; enough for a vehicle and tools storage. Or maybe you simply wish to transform your Garage into a mechanic's shop.



*The Sales and Delivery/Set-up Team were great! The Materials, Design, and Cut Lumber are excellent!*

Rita M

*the* **GARAGES**

**INCLUDED OPTIONS:** 12x24 Lofted Garage, with Sterling Grey vinyl siding & trim, 9' roll-up door, 9-lite door, 1 window, and a black metal roof



## STANDARD FEATURES

- Treated 12" O.C. floor joists
- Thick-coated galvanized nails
- Metal roof (or choose shingles)
- One window for natural lighting
- Honey Gold stain on treated T1-11 siding (or choose between metal and vinyl siding with many color options)
- Metal entry door (solid or 9-lite) and 9' metal roll-up door
- 5/8" treated plywood floor (upgrade to 3/4" available)

## Garage Prices

Size	Cash	FlexLease	Lofted	FlexLease	Size	Cash	FlexLease	Lofted	FlexLease
12x16	\$4,275	\$158.33	\$4,725	\$175.00	14x16	\$5,200	\$192.59	\$5,650	\$209.26
12x20	\$4,750	\$175.93	\$5,250	\$194.44	14x20	\$5,875	\$217.59	\$6,425	\$237.96
12x24	\$5,325	\$197.22	\$5,875	\$217.59	14x24	\$6,825	\$252.78	\$7,275	\$269.44
12x28	\$5,875	\$217.59	\$6,595	\$244.26	14x26	\$6,975	\$258.33	\$7,825	\$289.81
12x30	\$6,275	\$232.41	\$7,050	\$261.11	14x28	\$7,475	\$276.85	\$8,250	\$305.56
12x32	\$6,675	\$247.22	\$7,500	\$277.78	14x32	\$8,475	\$313.89	\$9,150	\$338.89
12x36	\$7,495	\$277.59	\$8,375	\$310.19	14x36	\$8,995	\$333.15	\$9,995	\$370.19

Prices shown include a 2.5% discount offered for purchases made with cash or check. Credit card purchases are not eligible for the discounted price and will be priced 2.5% higher.



### *the* LOFTED GARAGE

12x24 with treated T1-11 siding, 9' roll-up door, 9-lite door, 1 window, and a brown metal roof



### *the* GARAGE

12x24 with treated T1-11 siding, 9' roll-up door, metal entry door, 1 window, & brown metal roof





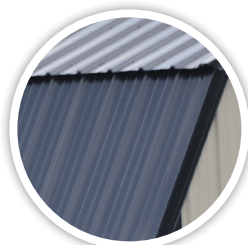
# our STANDARD FEATURES



Honey Gold Stain on Pressure Treated T1-11 Siding



Metal Siding, lots of colors to choose from...



Metal Roof



Thick Coated Galvanized Nails



Tight Reinforced Wood Door(s)



Painted Aluminum Drip-Edge



Air Vents



5/8" Treated Plywood Floor



Treated 16" O.C. Floor Joists

## 8' WIDE BUILDINGS

- 2 pressure treated 4"x6" skids
- 4' wooden barn door (45.5" Opening)

## 10' & 12' WIDE BUILDINGS

- Four pressure treated 4"x6" skids
- 6' double wooden barn doors (69.5" opening)
- Buildings 12' wide are measured eave to eave due to DOT regulations.

## 14' WIDE BUILDINGS

- Four pressure treated 4x6 skids
- 2x6 treated floor joists
- 6' double wooden barn doors

## CABINS

- Metal clad door
- Three windows
- Specify length of porch (standard 6') included in building size
- Hooks can be installed for swing upon request. (doesn't include swing)

## GARDEN SHEDS

- One window
- Door on side (length) of building

## GARAGES

- 5/8" treated plywood floor (upgrade to 3/4" available.)
- Treated 12" O.C. floor joists
- 9' x 7' roll-up door
- One window
- One metal-clad door



# our STANDARD COLORS

## VINYL COLORS

15% Extra Charge for Vinyl Siding.



Vintage Cream



Sand



Brownstone



White



Heather



Wicker



Harvard Slate



Linen



Flagstone



Blue Gray



Sterling



Soft Maple

## METAL COLORS

### Standard Stock Colors



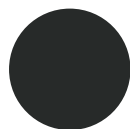
Green



Brown



Red



Black

### Special Order Colors - no extra charge



White



Light Stone



Charcoal



Clay



Tan



Bright White



Gray

### Special Order Colors - 5% upgrade charge



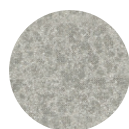
Buckskin



Plum



Dark Red



Galvalume®



Burnished Slate



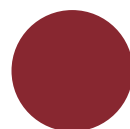
Gallery Blue



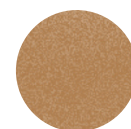
Blue



Sapphire Blue



Bright Red



Copper Penny

## WOOD STAIN COLOR



HONEY GOLD



# our OPTIONS & ACCESSORIES

## STRUCTURE



Concrete Block for Leveling  
**\$2/ea**



7' Wall Upgrade on 8' and 10'  
Wide Utility Buildings only  
**add 5%**



On-Site Construction Available  
(speak to sales rep for more info)  
**add 22%**



3/4" Flooring  
**\$0.35/sq ft**



12" On-Center Floor Joists  
**\$0.25/sq ft**



2x6 Floor Joists  
**\$0.25/sq ft**



16" On-Center Studs  
**\$0.35/sq ft**



16" On-Center Trusses  
**\$0.25/sq ft**

## WINDOWS & DOORS



2' x 3' White Window (standard in  
metal and vinyl buildings)  
**\$75**



2' x 3' Brown Window (standard  
in all wooden buildings)  
**\$75**



Metal Clad Door  
(7' walls only)  
**\$185**



9 Lite Door  
(7' walls only)  
**\$225**



Short 9 Lite Door  
(for Lofted Barns)  
**\$225**



## WINDOWS & DOORS (CONT) & ROOF



Single Wooden Barn Door  
**\$75**



Double Wooden Barn Door  
**\$150**



9' x 7' Garage Roll-Up Door  
Available for Garages only  
**\$395**



Ridge Vent - per foot  
**\$5/ft**



Skylight Ridge Cap  
**\$85 per 10'**

## EXTERIOR



Vinyl Siding  
**add 22%**



Metal Siding 29 Gauge Thick-  
ness, 40 yr Paint Warranty  
**add 16%**



Side Porch  
**\$695**



Porch Package - 5 Windows,  
9-Lite Door, Wrap-around  
Porch with Railing - **\$999**



46" • 60" • 96" Ramp  
**\$85, \$115, \$175**

## INTERIOR



Loft Ladders  
**\$50**



Single or Double Shelf 16" deep  
**\$5.50/ft or 10/ft**



Work Bench 24" deep  
**\$8/ft**



Electrical Package - 110v  
1 Service Box, 2 60w Bulbs,  
1 Light Switch, 3 Receptacles  
See dealer for details.  
**\$295**



Opening Loft Door  
Lofted Buildings only  
**\$75**



## *our* DELIVERY & SITE PREP



### WHY GET DELIVERY FROM US ?

- Our drivers are experienced and courteous
- It's affordable - Free within 80 Miles of our Rose Hill, VA location (or 25 miles from the point of purchase)
- Superior equipment allows us to deliver in many unique and difficult locations
- We'll handle slight slopes; up to 10 x 16 buildings provide leveling
- You can purchase concrete blocks from our team if needed
- We have the tools to make the delivery as smooth as possible





## THREE PAYMENT OPTIONS

### CASH PAYMENT

- 10% deposit when you order the barn and the balance on delivery
- .....

### FINANCING

- 100% financing available with a quick approval process
  - Rates as low as 9.99% with approved credit & Terms from 12 to 60 months
  - Competitive low rates.
  - And there are no pre-payment penalties!
  - With approved credit, you can receive 100% financing on your purchase.
  - 5 easy payment options: online, via phone, auto draft, mail payment or by calling an account representative.
- .....

### FLEXLEASE

- The most flexible path to ownership!
- Early purchase option available at any time during the term of the contract
- Ability to return the product at any time with no further obligations.
- No credit checks, so your credit score is not impacted.
- Low down payment
- Leases are not classified as "loans" and do not carry fluctuating interest rates helping you budget exactly how much you will be paying each month.
- Great alternative to off-site storage
- No penalties or extra fees if you choose to buyout early! In fact, you save money if you choose to buy out early.







**TimberLine  
BARNs**

[www.TimberlineBarns.com](http://www.TimberlineBarns.com)

Timberline Barns is a locally owned and operated company. We love and serve the people in our surrounding areas and states. This is our home; here is our commitment to family and traditional values. We are delighted to bring you quality products that will last for years to come.

.....

**... but as for me and my house,  
we will serve the Lord. Joshua 24:15**